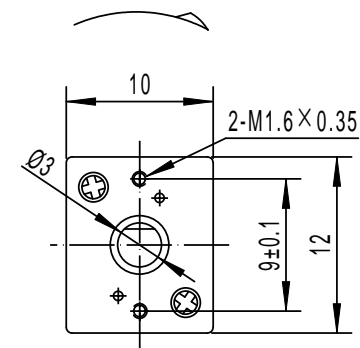
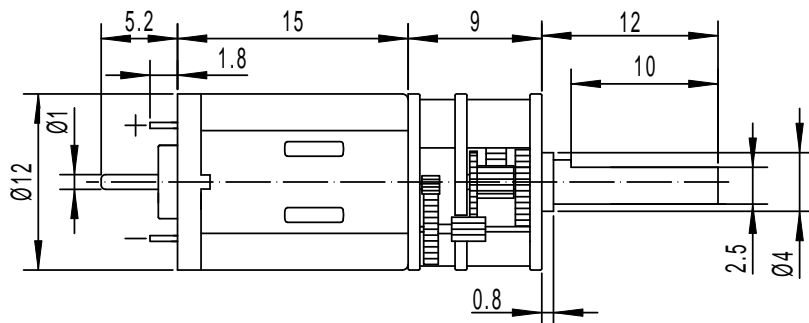
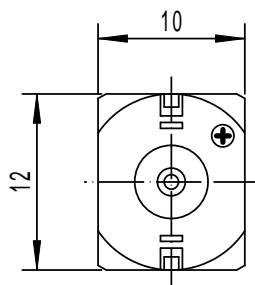


# GM12-N20VA-09163-50 MOTOR

DIRECTION OF ROTATION



MOTOR Specification(For Reference):

Operating voltage: 6.0V DC

- 1、 No Load Speed:420±12%rpm
- 2、 No Load Current:70mA( 100mA max)
- 3、 Stall Torque:500g.cm
- 4、 Stall Current:0.98A

TITLE: GM12-N20VA-09163-50		Customer No: S0547		Drafted By: 何义强	
Dwg.NO: PO202312078		Date: 2023.12.20		Checked By:	
TT MOTOR (HK) INDUSTRIAL CO.,LTD		2:1		Units: mm	
		EDITION No: A		Angular: =1°	
				Decimal: X.XX ±0.05 X.X ±0.2 X ±0.3	