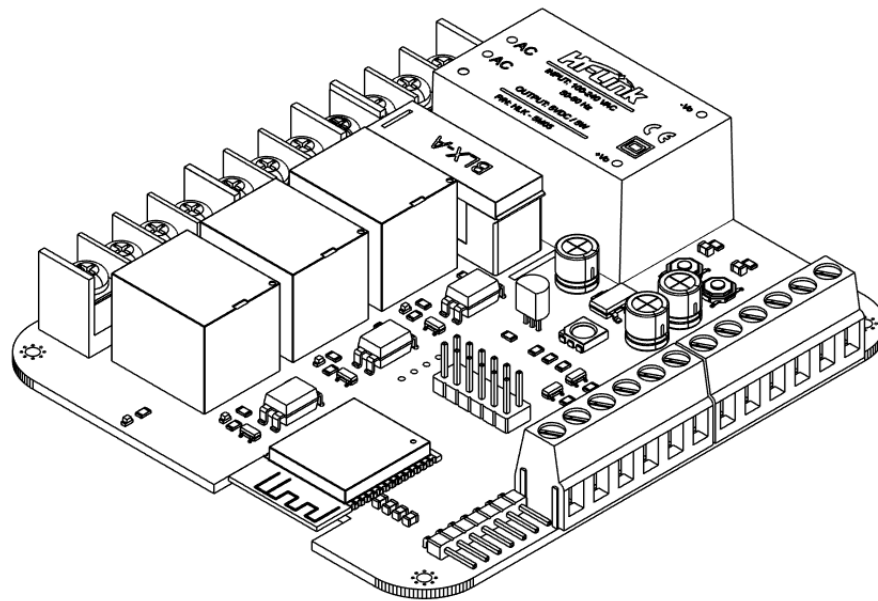


ESP32 IOT RELAY BOARD



Fewalab Industries
Bhaktapur, Nepal
thefewalab@gmail.com | www.fewalab.com

Overview

This is a generic board that consists of ESP32 and three relays which can be used in industrial and home automation.

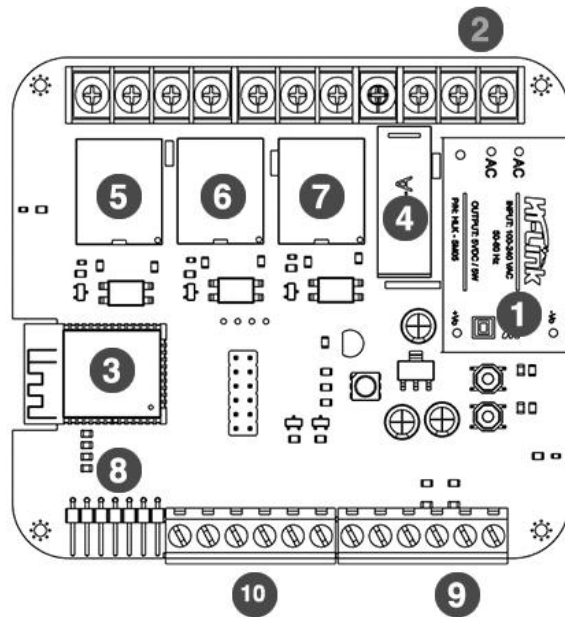
General Features

- 3 Channel Relay
- In-built AC-DC Converter
- Program via Arduino
- In-built fuse for protection
- 5V Relays
- PCB Dimensions: 100x90x20 mm
- Mass:
- Microcontroller: ESP WROOM 32
- RGB Light
- Temperature Sensors
- Extra LEDs connected to IO
- Dashboard and Code ready at github

A basic code is available at our github page, from which you can control the relays via a website hosted in the local IP. From there you can modify the code according to your need.

Applications

- Automation
- Agriculture/ Irrigation
- Controlling Aquarium
- Home Automation
- IOT Projects Prototyping



- | | | |
|--------------------------|---------------------|---------------------|
| 1 AC-DC Converter | 5 RELAY-1 | 9 RELAY-1 |
| 2 AC INPUT | 6 RELAY-2 | 10 GPIO PINS |
| 3 ESP32 | 7 RELAY-3 | |
| 4 FUSE | 8 PROGRAMMER | |

Github Links

https://github.com/thefewalab/ESP32_IOT_Relay

MECHANICAL SPECIFICATIONS

All the dimensions are mm.

PIN DIAGRAM

