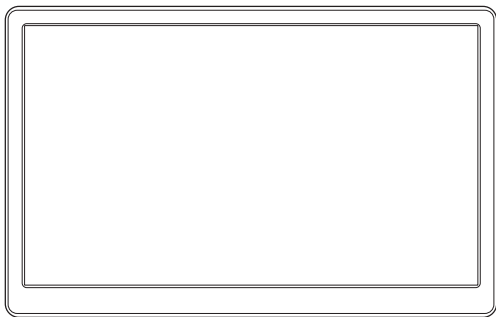




ELECROW 10.1-inch 2K IPS Portable Monitor

Model: SQ101



USER MANUAL

Customer Support:

Should there be any questions, please feel free to let us know and contact us with your purchase order number at info@elecrow.com.

Table of Contents

Chapter 01: Before Using the Product	2
<hr/>	
1-1. Safety Precautions	2
1-1-1. Electricity and Safety	2
1-1-2. Installation	2
1-1-3. Cleaning	2
1-2. Package Contents	3
1-3. Product Description	3
1-3-1. Port Description	4
1-3-2. Button Indications	4
Chapter 02: Connecting and Using a Source Device	5
<hr/>	
2-1. Connected to Laptop (with HDMI Port)	5
2-2. Connected to Other Device (with DP Port)	5
2-3. How to Set Your PC/Laptop Monitor to Duplicate or Extend Mode & How to Rotate the Screen	6
Chapter 03: Screen Setup	6
<hr/>	
3-1. How to Reconfigure OSD (On-Screen Display) Menu	6
3-2. OSD Function Introduction	7-8
Chapter 04: Specifications	9
<hr/>	
Chapter 05: Troubleshooting Guide and Warranty	10
<hr/>	
5-1. Troubleshooting Guide	10
5-2. Warranty	11
5-3. Customer Support	11

1-1. Safety Precautions

1-1-1. Electricity and Safety.

⚠ Warning

- ⊘ Do not use a damaged power cord or plug, or a loose power socket.
 - An electric shock or fire may result.
- ⊘ Do not touch the power plug with wet hands.
 - An electric shock may result.
- ❗ Insert the power plug all the way in so it is not loose.
 - An unsecure connection may cause a fire.

1-1-2. Installation

⚠ Warning

- ⊘ Do not install the product near heat sources.
 - A fire may result.
- ⊘ Do not set down the product on its front.
 - The screen may become damaged.
- ⊘ Do not install the product on an unstable or vibrating surface (insecure shelf, sloped surface, etc.)
 - The product may fall and become damaged and/or cause an injury.
 - Using the product in an area with excess vibration may damage the product or cause a fire.

1-1-3. Cleaning

— Take the following steps when cleaning.

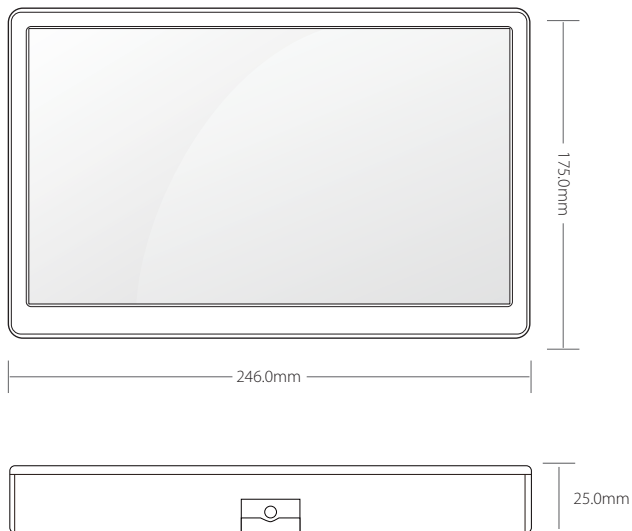
- 1. Power off the product and computer.
- 2. Disconnect the power cord from the product.
 - Hold the power cable by the plug and do not touch the cable with wet hands. Otherwise, an electric shock may result.
- 3. Wipe the monitor with a clean, soft and dry cloth.
- ⊘ Do not apply a cleaning agent that contains alcohol, solvent, or surfactant to the monitor
- ⊘ Do not spray water or detergent directly on the product.

- 4. Wet a soft and dry cloth in water and wring thoroughly to clean the exterior of the product.
- 5. Connect the power cord to the product when cleaning is finished.
- 6. Power on the product and computer.

1-2. Package Contents

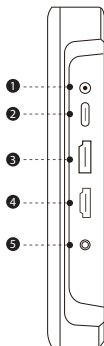
- 1 x Monitor
- 1 x HDMI to HDMI Cable
- 1 x Power Supply
- 1 x Metal Stand
- 1 x User Manual

1-3. Product Description

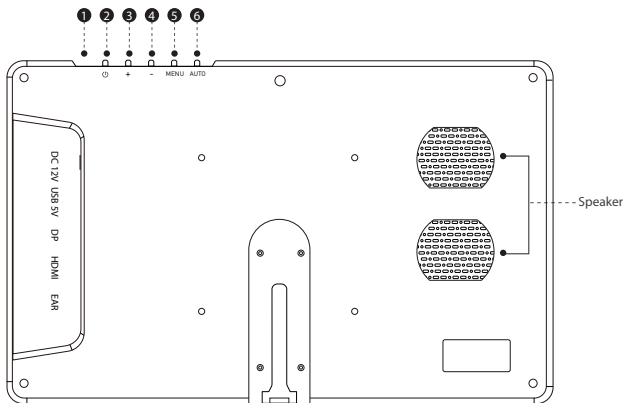


1-3-1. Port Description

- 1 DC 12V: DC 12V power port.
- 2 USB 5V: USB C 5V power port.
- 3 DP: Display Port Interface.
- 4 HDMI: Digital video signal input HDMI.
- 5 EAR: 3.5mm headphones audio output .



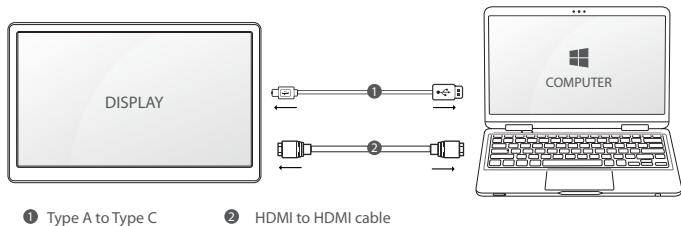
1-3-2 . Button Indications



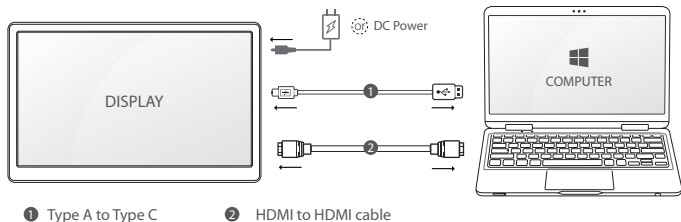
- | | | |
|---|--------------|-------------------------------------------------------------------------------------------------------------|
| 1 | Light | Red/Blue light, indicated the working status. |
| 2 | | Turn on/off the monitor when it powered. |
| 3 | + | By default, the key is the hot key for volume.
When in the OSD menu, press for up/increase adjustment . |
| 4 | - | By default, the key is the hot key for volume.
When in the OSD menu, press for down/decrease adjustment. |
| 5 | MENU | Press to display the setting OSD menu.
When in the OSD menu, press to confirm the selection. |
| 6 | AUTO | When in the OSD menu, press to exit the OSD menu. |

Chapter 02 Connecting and Using a Source Device

2-1. Connected to Laptop (with HDMI Port)

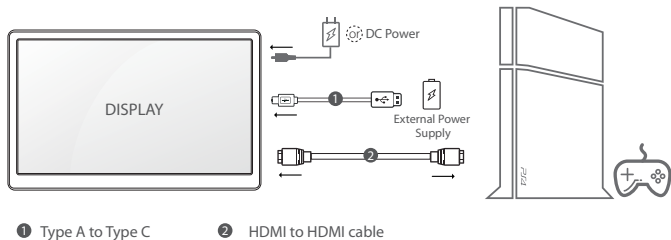


OR



⚠ Note: Some computers have low power USB ports, do not forget to connect to an external power supply of 5V/2A or above.

2-2. Connected to Other Device (with DP Port)



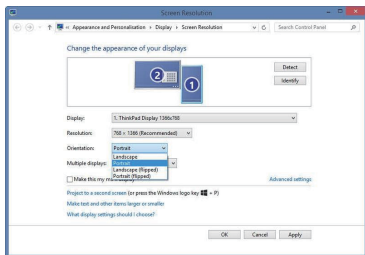
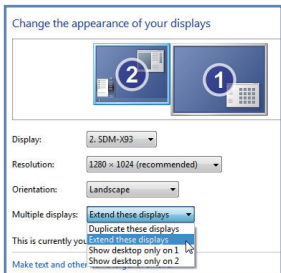
2-3. How to Set Your PC/Laptop Monitor to Duplicate or Extend Mode & How to Rotate the Screen

1. Connect the monitor to your PC properly and power it on.
2. Right click the desktop and select Screen resolution (Win 7/8) or Display settings (Win 10).
3. Click the Multiple display drop-down list, select Extend these displays or Duplicate these displays.

*If you can't see the additional monitor listed, please click Detect. If it doesn't work. Restart your PC then try below steps again

4. Click the Orientation drop-down list, select Portrait or Landscape screen.

* If you can't see the option of Orientation on your PC/laptop, please check if your PC/laptop has this function.



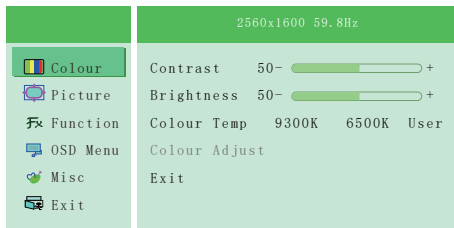
Chapter 03 Screen Setup

3-1. How to Reconfigure OSD (On-Screen Display) Menu

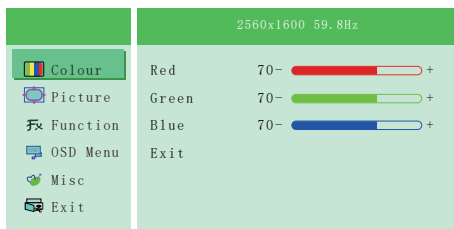
1. Press the **MENU** button to activate the OSD menu.
2. Press the **+/-** button to toggle between options in the menu. As you move from one icon to another, the option item is highlighted.
3. To select the highlighted item on the menu press the button **MENU**.
4. Press the **+/-** button to select the parameter.
5. Press the button **MENU** to enter the slide bar and then use the **+/-** button to make your changes, according to the indicators on the menu.
6. Press the **AUTO** to save the setting and return to the previous menu. If you want to adjust any other functions, repeat steps 2-5.

3-2. OSD Function Introduction

Colour

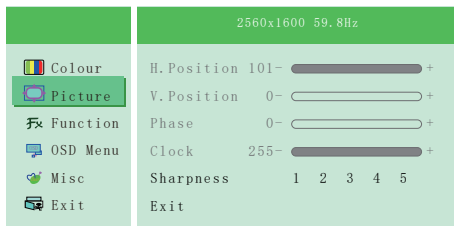


- **Contrast:** Controls the contrast of picture displayed. The adjusting range is from 0 to 100.
- **Brightness:** Controls the brightness of picture displayed. The adjusting range is from 0 to 100.
- **Colour Temp:** Controls the screen colour temperature of 6500K/9300K/User*.
- **Colour Adjust:** Use +/- to adjust the R/G/B value.



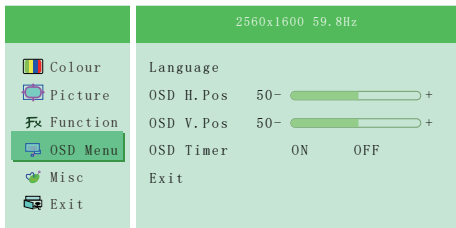
 *Note: Only under the User Mode, you could enter Colour Adjust.

Picture



- **Sharpness:** Controls the details of picture displayed. The adjusting range is from 1 to 5.

OSD Setting



- **Language:** Select the OSD language.

The selections are: English/German/Korean/Chinese Traditional /Japanese/French/Spanish/Italian /Chinese Simplified/Portuguese.

- **OSD H. POS.:** Adjust the horizontal position of OSD menu.

The adjusting range is from 0 to 100.

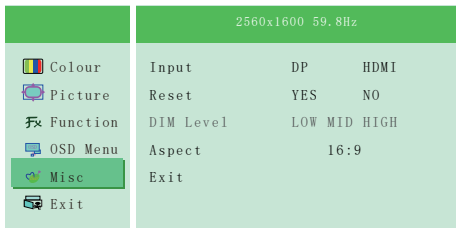
- **OSD V. POS.:** Adjust the vertical position of OSD menu.

The adjusting range is from 0 to 100.

- **OSD Timer:** Adjust the display time of the OSD menu.

The adjusting range is from 5s to 60s.

Misc



- **Input:** Adjust the signal source to "DP" or "HDMI".
- **Reset:** Selects "Yes" to revert all settings to the factory default mode.
- **Aspect:** Adjusts the aspect ratio to "16:9" or "4:3".

Exit

- Exit the OSD menu.

Chapter 04 Specifications

Model Name	SQ101
Panel Size	10.1 inch
Aspect Ratio	16:10 (W:H)
Brightness	400 cd/m ²
Contrast	1000:1 (Min.)(TM)
Resolution	2560*1600
Viewing angle	80/80/80/80 (Min.)(CR≥10)
Display Color	16.7M , 72% (CIE1931)
Vertical Frequency	60Hz
Display Mode	ADS, Normally Black Transmissive
Response Time	16 (Typ.)(Tr+Td) ms
Supported Resolutions	2560*1600@60Hz for WQXGA mode
Power Source	DC 12V (+/-0.6V) or USB 5V
Power Consumption	Standby <1W, Power on<8W
Phys. Dimension (WxHxD)	246*175*25mm
Net Weight (Esti.)	410.6g

5-1. Troubleshooting Guide

• This page deals with problems that can be corrected by a user. If the problem still persists after you have tried these solutions, please contact customer support.

Problem	Possible Solutions
No Power	1. Make sure the power cord is plugged properly.
	2. Press the power button to check if the monitor is ON.
No Picture/No Signal	1. Check whether the monitor and the signal output device are in the ON mode.
	2. Reconnect the signal cable.
	3. Check if the signal is matched with the input function.
	4. Connect another available output device/signal cable/monitor to check whether the issue is caused by the output device hardware, the video signal to the monitor or the monitor itself.
No Sound	1. Adjust the volume settings via the button.
	2. Check whether the headphone is inserted.
	3. The silencer is working.
Dark/Light Picture	Adjust the Brightness settings via the button.
Image is Blurred	Select the correct resolution.

5-2. Warranty

• ELECROW Monitors carry a one (1) year limited warranty from the purchase date. In order to receive warranty service, proof of purchase of the ELECROW product is required. To obtain warranty service, please contact Customer Support.

- This limited warranty does not cover for:

Improper installation or maintenance; Misuse or Neglect; Repair, modification, or installation of options or parts by you or any third party; Improper environment- Excessive or inadequate heating or air conditioning or electrical powers failures, surges or other irregularities; Fire, flood, earthquake or other accidents.

5-3. Customer Support

- If you have any questions, customer support is always stand by.



info@elecrow.com



[@elecrow](https://www.facebook.com/elecrow)



[@elecrow](https://twitter.com/elecrow)