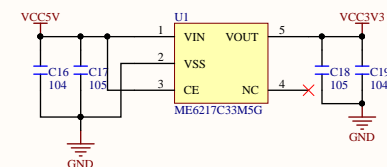
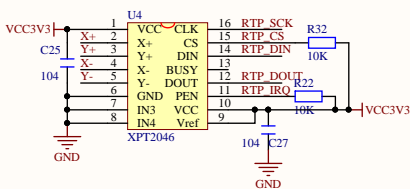


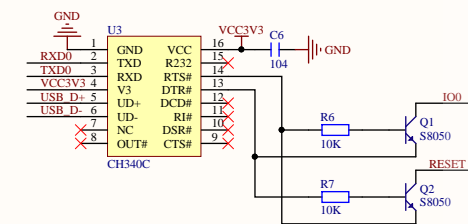
Type-C Interface circuit



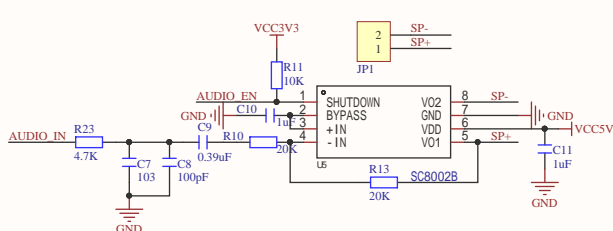
5V to 3.3V voltage regulator circuit



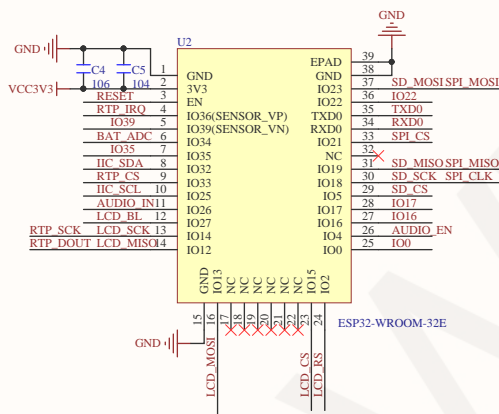
Resistive touch screen control circuit



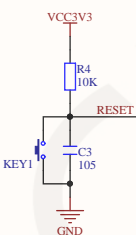
USB to serial port and one-click download circuit



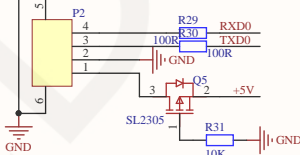
Audio power amplifier circuit



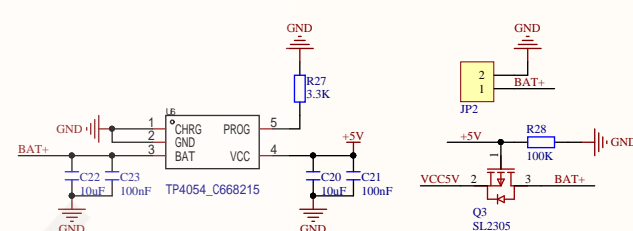
ESP32-WROOM-32E Main control circuit



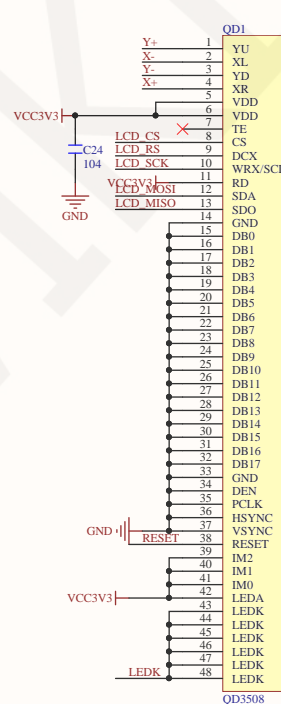
Key reset circuit



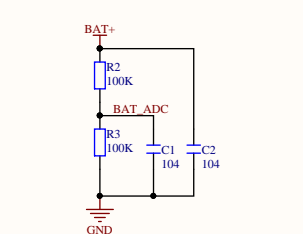
Serial port module interface circuit



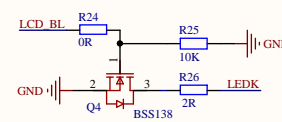
Battery charge and discharge management circuit



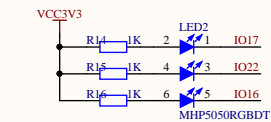
48P LCD panel wire welding interface



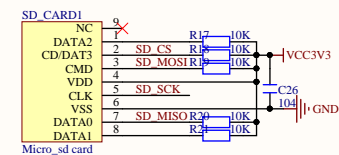
Battery level detection circuit



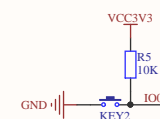
LCD screen backlight control circuit
High level lighting backlight



RGB three-color light control circuit
Low level Light LED lights



MicroSD card slot interface circuit



Download key circuit

Expanded IO and peripheral interface circuits

Title	3.5-inch ESP32-32E display module Schematic	Altium Limited
Size: A3	Number:	13, 12a Rodborough Rd
Date: 8/19/2024	Time: 3:28:08 PM	Revision:
File: G:\project\3.5inch\ESP32项目\尺寸图\3.5inch ESP32-32E resistance board_en.SchDoc	Sheet of	Franches Forest
		NSW
		Australia 2086