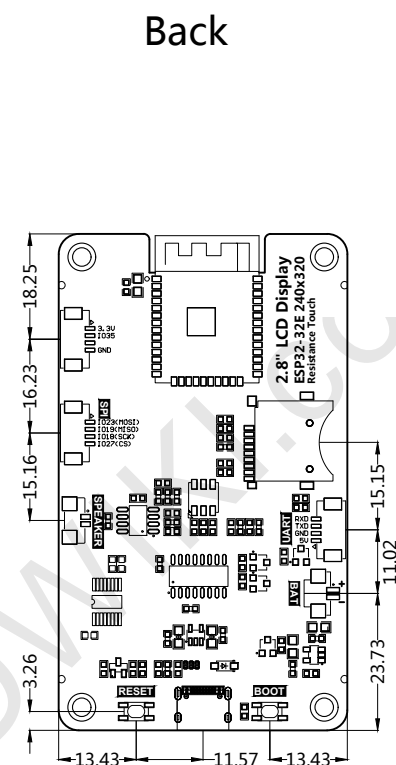
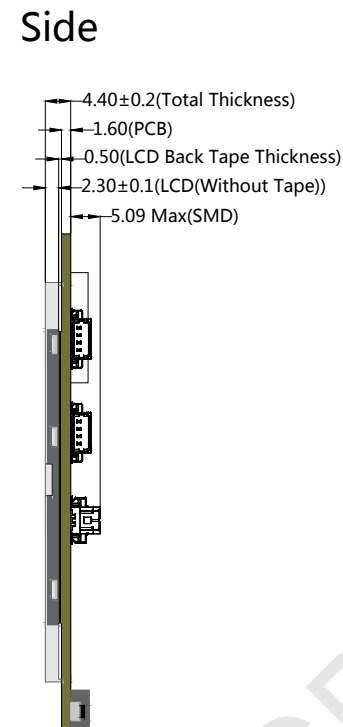
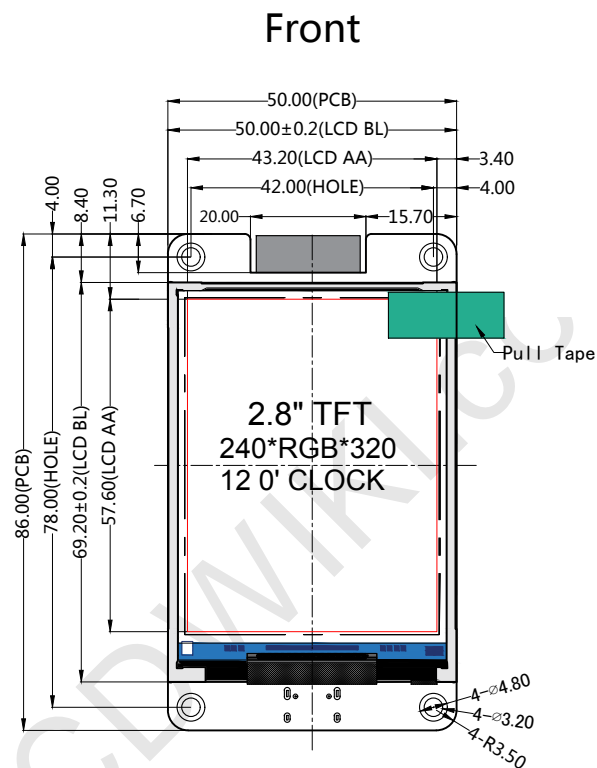


REVISION	RECORD	Date
V1.0	First release	2024-08-31



NOTES:

- 1.DISPLAY TYPE: 2.8" ESP32-32E DISPLAY
- 2.VIEWING DIRECTION: 12 O'CLOCK(TN TFT)
- 3.DRIVE IC: ILI934IV
- 4.POLARIZER MODE: TRANSMISSIVE/POSITIVE
- 5.RESOLUTION: 240*RGB*320
- 6.INTERFACE: SPI_4-Line(CONNECT TO ESP32)
- 7.UNMARKER TOLERANCE: ± 0.2
- 8.OPERATING TEMP: $-10^{\circ}\text{C} \sim +60^{\circ}\text{C}$

<div style="text-align: center;"> <h1>深圳市全动电子科技有限公司</h1> <p>ShenZhen QDtech electronic technology Co.,LTD.</p> </div>						DRG DATE	2024-08-31
						DRAWING	Joan
TITLE.	LCM OUTLINE	REV.	UNIT	SIZE	 (3)	CHECK	Green
SKU.	E32N28T	V1.0	mm	A4		APPROVE	Rose