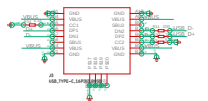
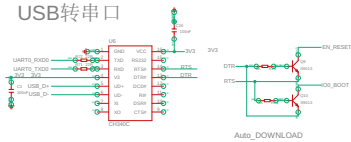


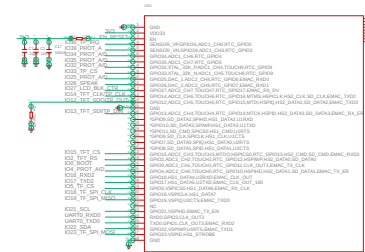
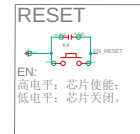
USB type-c座子



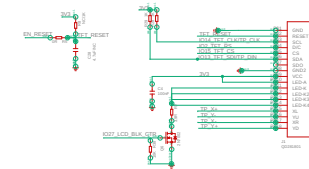
USB转串口



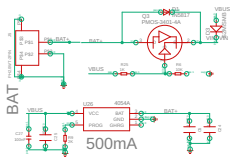
主控 ESP32-WROOM-32-N4



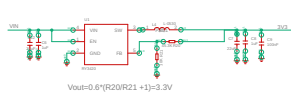
LCD+TP 接口



电池及控制电路



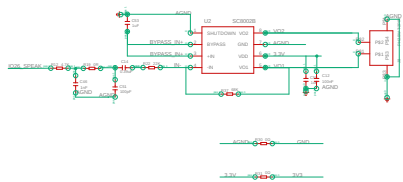
系统3.3V电源



POWER LED



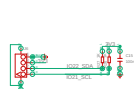
SPEAK 功放



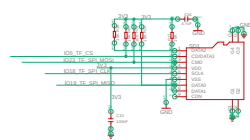
GPIO A/D接口
可以扩展UART口
可以扩展I2C口



I2C接口



TF Card



UART1接口



TP驱动:XPT2046

