



Joystick for CrowBot

Assembly Instruction



Explore Electronic World

For more product information and help, please visit the website.

<https://www.elecrow.com/>

WARNING

CHOKING HAZARD

Small parts. Not for kids under 3 years.
Children to use only under adult supervision.



STEAM
EDUCATION

1 Preparation



Joystick Board x1



Top Transparent Acrylic x1



Bottom Acrylic x1



OLED Screen x1



ø13x8.2mm Button Cap x4



M3x9mm Copper Column x4



AAA Battery x2 (not included)



M3x8mm Screw x8



ø6x6mm Button Cap x2



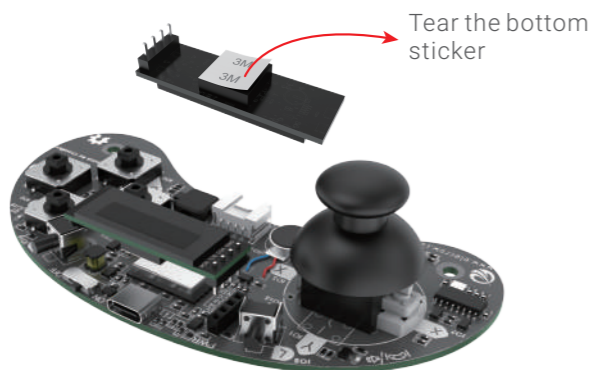
Screwdriver x1

2 OLED Screen

1x OLED Screen



1x Joystick Board



Tear the bottom sticker

3 Top Button Cap



ø13x8.2mm Button Cap x4



4 Front Button Cap



ø6x6mm Button Cap x2



5 Bottom Acrylic



Bottom Acrylic x1



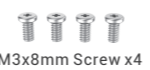
M3x8mm Screw x4



M3x9mm Copper Column x4



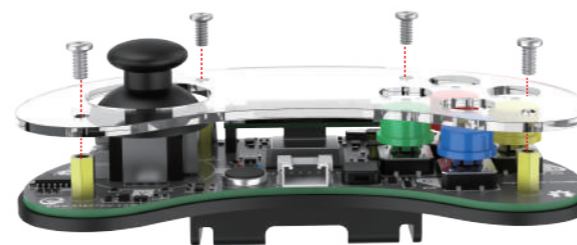
6 Top Acrylic



M3x8mm Screw x4



Top Transparent Acrylic x1



7 Battery



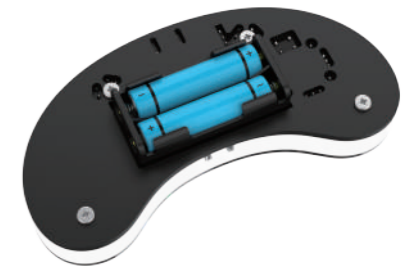
AAA Battery x2 (not included)



8 Finish



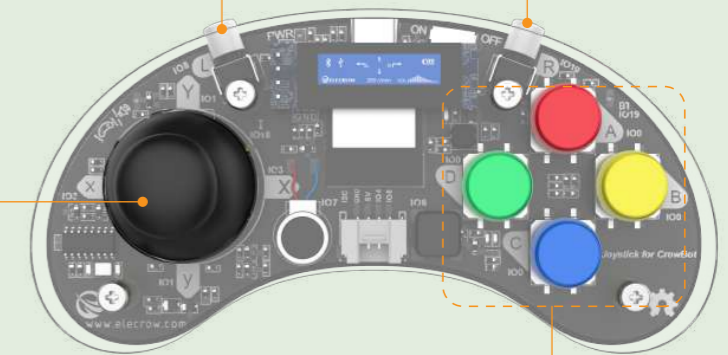
Front



Back

Instructions for Factory Procedures

L Turn on the light R Buzzer sounds



Omnidirectional lever

- Go ahead
- Go back
- Turn left
- Turn right
- Press to cancel the program

- | A | B | C | D |
|-------------------------------------|---------------------|---------------------|---------------------|
| Ultrasonic obstacle avoidance robot | Line tracking robot | Light chasing robot | Music playing robot |
| | | | |

Notice:

- Preset infrared remote controller functions. If you reload other programs, the above functions will be invalid.
- If you need, visit the product link or contact customer service to ask for this factory setting program.

